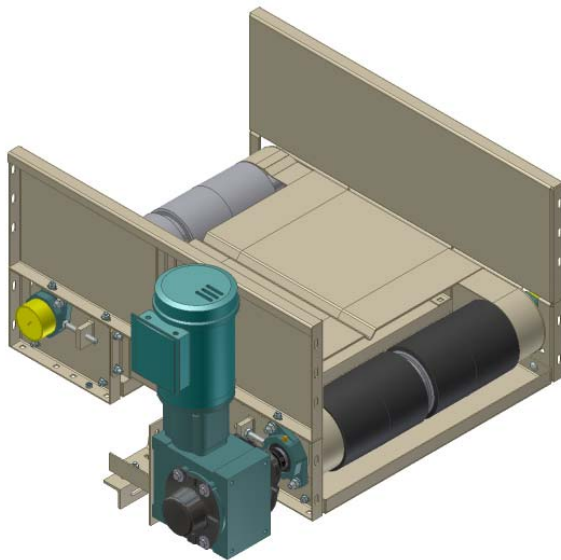


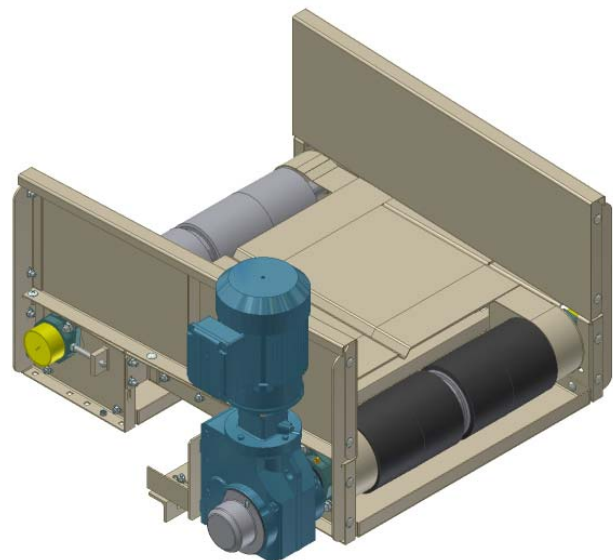
3000 SERIES UNI-QUEUE™ TECHNICAL SPECIFICATIONS

Design Elements:

- The 3000 Series Uni-Queue™ is designed to compliment the larger 9000 Series Uni-Belt™ in a more compact package utilizing many similar components, enabling unique solutions for a diversity of applications.
- With the use of a tapered side guard configuration, the Uni-Queue™ can be utilized upstream of an EDS to funnel baggage into a narrower opening. With a standard straight frame and a high cycle rate, it can be used as a method of traffic control at merge points.
- A compact design allows for installation at ticket counters, with a low loading height of 12", and can be trimmed in stainless steel.
- With 11 gauge steel construction and full-sized end rollers, the Uni-Queue™ can easily sustain 120-pound bags being dropped from a height of 12".
- For TSA applications, the Uni-Queue™ can be mounted at any height to match the latest of screening devices, allowing smooth and efficient transfers for load and offload belts.
- The Uni-Queue™ also has the unique ability to travel in reverse, as well as forward, creating an assortment of special applications.



36" Long Model with Dodge Tigear-2 Reducer

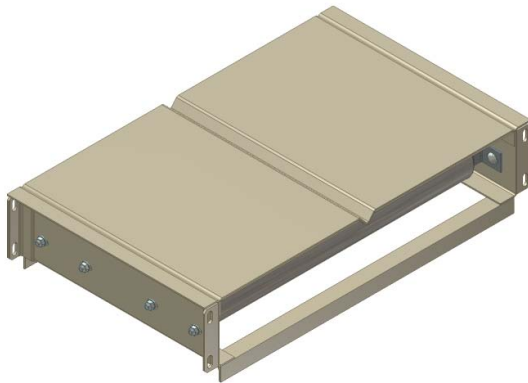


36" Long Tapered Model with SEW KA Series Gearmotor

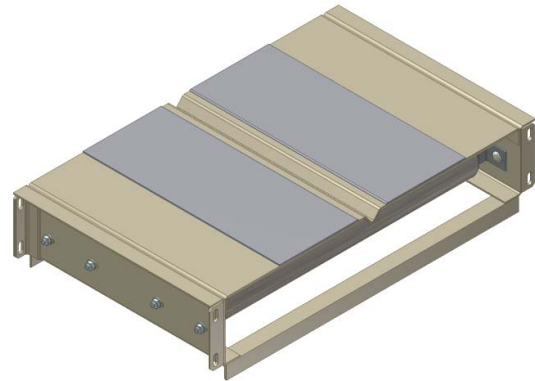
3000 SERIES UNI-QUEUE™ TECHNICAL SPECIFICATIONS

General Dimensions and Capacities:

- 1.) Width of Belting Surface = 24" to 36" (27" BF to 39" BF)
- 2.) Minimum Length of Queue Conveyor= 36"
- 3.) Conveying Speed (Varies) – 30 to 210 FPM
- 4.) Load Capacity – 60 lbs/ft Live Load



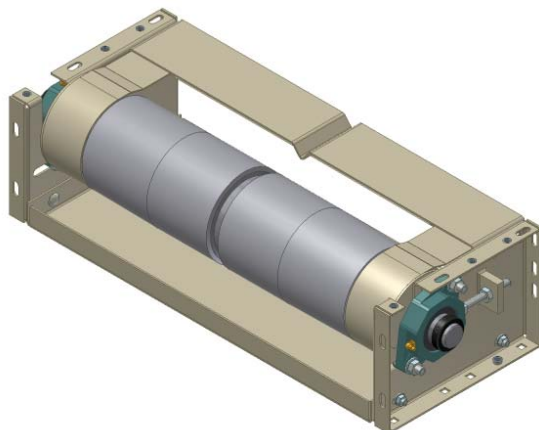
V-Grooved Bed Assembly



V-Grooved Bed Assembly with Filler Plate

Bed Frames:

Conveyor bed frames are of welded steel construction. Top bed surfaces are V-Grooved for positive tracking, formed from 11 gauge steel, braced with welded 3/16" x 1 1/4" x 1 1/4" steel angle stiffeners to the underside. 12 gauge steel filler plates are available to enable shrouding with HRS or stainless steel trim.

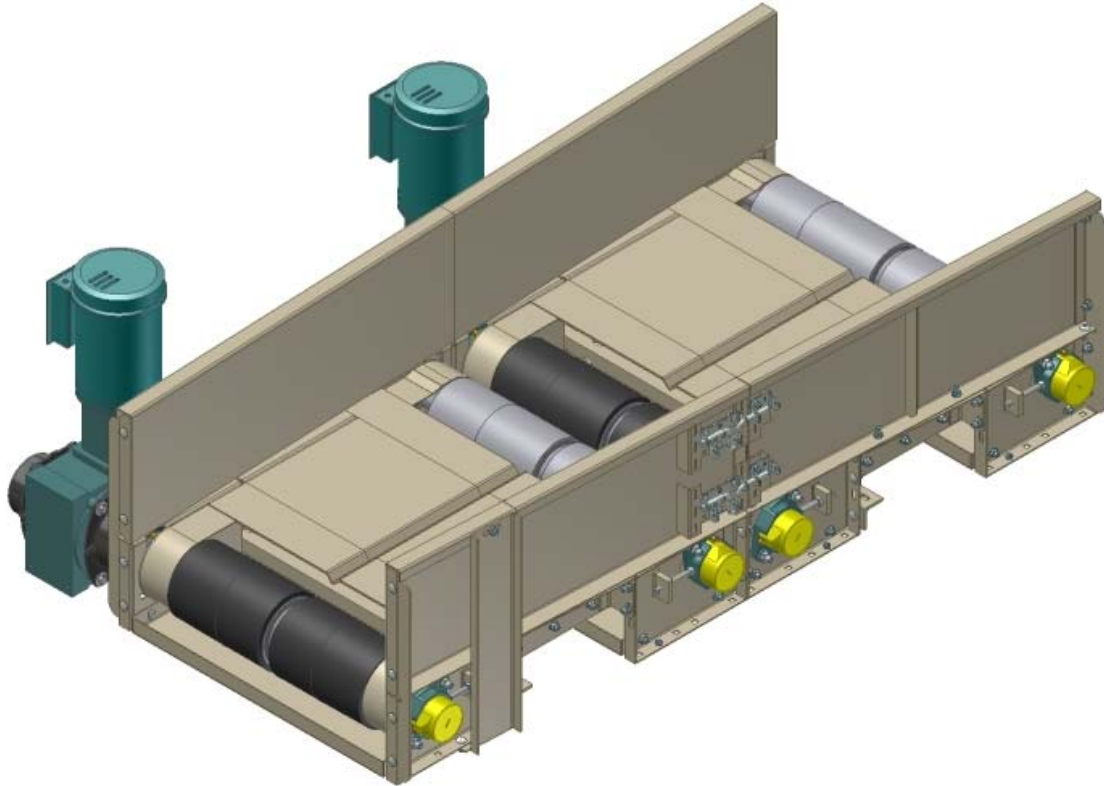


End Bracket Assembly with Finger Guards

End Brackets:

End bracket side panels are 8" tall x 12" long, fabricated from 11 gauge steel with a 2" long cutout for end pulley removal. End bracket filler beds are V-Grooved for positive tracking, formed from 11 gauge steel and braced with welded 3/16" x 1 1/4" x 1 1/4" steel angle stiffeners to the underside. For load/unload queue configurations, 14 gauge steel finger guards are available for shrouding the ends of the pulleys, and are supported by the filler bed stiffeners. Square head set screws and jam nuts are provided for end pulley adjustment and tensioning.

3000 SERIES UNI-QUEUE™ TECHNICAL SPECIFICATIONS



Queue Conveyor Assemblies with Tapered & Hinged Side Guards

Side Guards: Side guards are bolt-on style, fabricated from 12 gauge steel with welded external 3/16" x 1 1/4" x 1 1/4" steel angle stiffeners. Side guard heights range from 3" tall to 21" tall, with 1 1/2" wide top flanges and 1" tall return flanges for strength. Tapered and hinged style side guard configurations are also available, such as for EDS feed applications, enabling bag removal and insertion at the feed entry of the EDS.



Floor Support

Supports: Floor mounted conveyors are supported on formed 10 gauge steel channel leg assemblies. Each assembly is adjustable in height by means of slotted channels and galvanized brackets. Ceiling mounted conveyors are supported by 3/4-10 all-thread rod and 1/4" x 3" x 3" steel angle.

Belting: Belting is "V"-belt guided for positive tracking, typically either longitudinal grooved, or PVC 150 FS x FS, or as specified by customer. Belting lacing is Clipper UX-1 for longitudinal grooved, or Clipper No. 2 for FS x FS, with nylon coated wire cable (Clipper NyloSteel).

3000 SERIES UNI-QUEUE™ TECHNICAL SPECIFICATIONS



Drive Pulley with V-Groove and 3/8" Lagging

Pulleys: Drive pulleys and end/take-up pulleys are steel construction, machined for "B"-Belt type center groove for positive tracking of belting, and manufactured by Chantland. Drive pulleys and end/take-up pulleys are equipped with taper bushed hubs and $\text{\O}1\ 7/16$ " CRS shafts mounted in Dodge SXR ball bearing units. Drive pulleys are $\text{\O}6\ 3/4$ " overall with $3/8$ " vulcanized lagging. End/take-up pulleys are $\text{\O}6$ ".

Return Rollers: Return rollers are 9 gauge steel, $\text{\O}3\ 1/2$ " O.D. tubing with internally mounted sealed precision ball bearings and spring loaded $11/16$ " steel hex shafts. Return rollers mount between galvanized brackets on the inside portion of the conveyor bed.



Return Roller with Hex Shaft

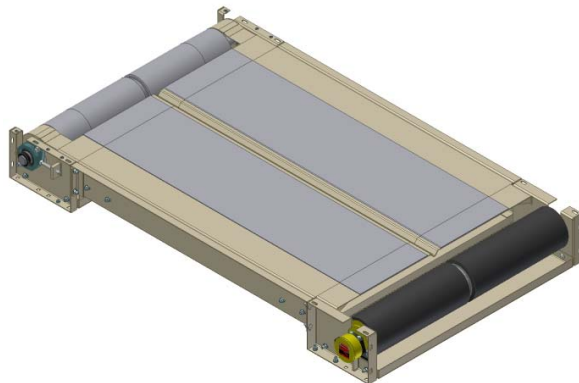
Trim and Finish: Trim and cladding consists of either powder coated 12 gauge HRS or 12 gauge 304 stainless steel with #4 brush finish. Finishes for HRS conveyor frames, side guards and supports are powder coated to customer specified colors.

Drives: A variety of drive configurations are available:

- Chain and sprocket with inline helical reducer.
- V-belt and sheave with shaft mount reducer.
- Right angle shaft mount reducer.
- Motorized drive pulley.

Reducer manufacturer applications:

- Dodge - TXT ABHS, Tigear-2, Quantis
- Sumitomo - HSM, Hyponic, Cyclo
- SEW Eurodrive Gearmotors
- Van der Graaf Drum Motors
- Rulmeca Drum Motors



Queue Assembly with Filler Plate and Motorized Pulley