

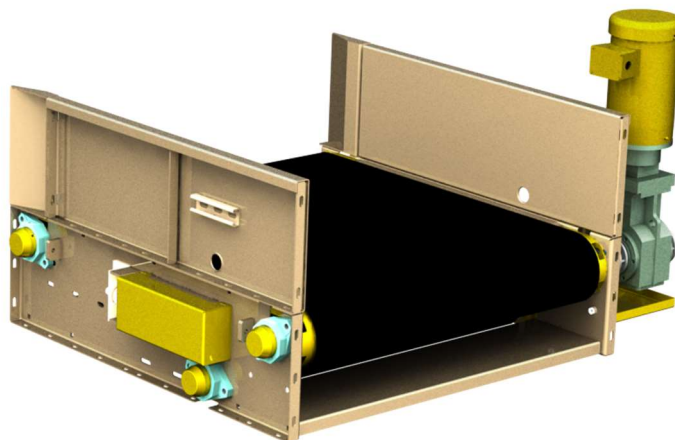


MADE IN USA

3000 Series Uni-Queue Technical Specifications

Design Elements:

- The 3000 Series Uni-Queue™ is designed to compliment the larger 9000 Series Uni-Belt™ in a more compact package utilizing many similar components, enabling unique solutions for a diversity of applications.
- The 3000 Series Uni-Queue has been tested and approved through BNP and Associates.
- With the use of a tapered side guard configuration, the Uni-Queue can be utilized upstream of an EDS to funnel baggage into a narrower opening. With a standard straight frame and a high cycle rate, it can be used as a method of traffic control at merge points.
- A compact design allows for installation at ticket counters, with a low loading height of 12", and can be trimmed in stainless steel.
- With 10 Gauge steel construction and full-sized end rollers, the Uni-Queue can easily sustain 120-pound bags dropped from a height of 12".
- For TSA applications, the Uni-Queue can be mounted at any height to match the latest screening devices, allowing smooth and efficient transfers for load and offload belts.
- The Uni-Queue also has the unique ability to travel in reverse, creating an assortment of special applications.



3000 Series Uni-Queue™ Belt
Conveyor

Bed Frames:

Conveyor bed frames of welded steel construction. The top bed surfaces are V-grooved for positive tracking, formed of 10 Ga. Steel, and braced with formed channels to prevent canning of the beds. 12 Ga. Steel filler plates are available to enable shrouding with either HRS or stainless-steel finish.

- 1.) Width of Belting Surface = 27" BF to 39" BF, standard
- 2.) Minimum Length of Queue Conveyor = 36"
- 3.) Conveying Speed = 30-210 FPM
- 4.) Load Capacity = 60 lbs./ft. Live load



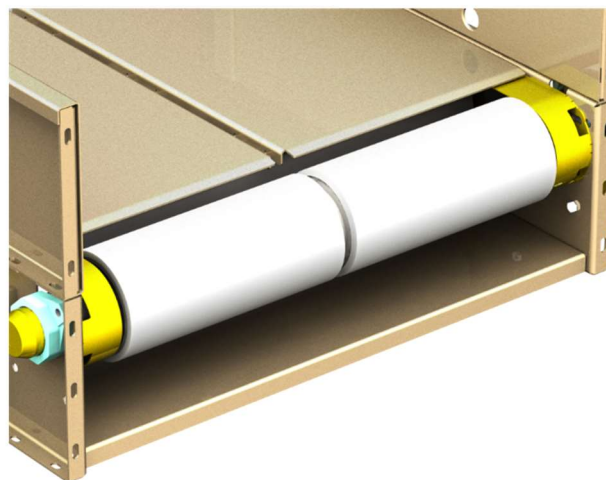
Bed Section Weldment



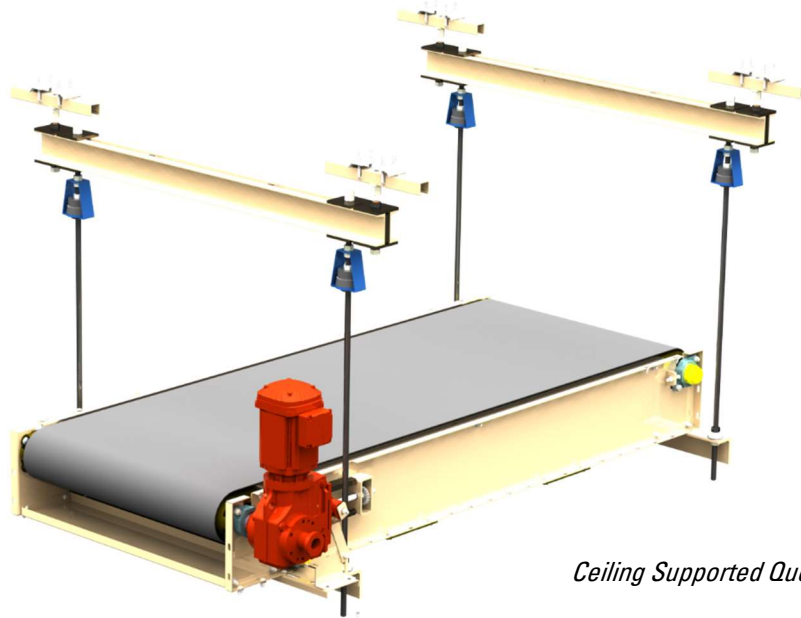
Bed Section Weldment, Underside

End Brackets:

End bracket panels are integrated into the bed side weldments. The panels are of 10 Ga. Formed and welded construction. The end brackets on both sides of the conveyor allow for easy removal of the end pulleys via a straight-out lift. Square head set screws and jam nuts are provided for end pulley adjustment and tensioning.



Integrated End Bracket in Side Panel



Ceiling Supported Queue Belt

Side Guards:

Side guards are bolt-on style, fabricated from 10 Ga. Steel with welded external 3/16" angle iron stiffeners. Side guard heights range from 3" to 21" tall, with 1-1/2" wide top and 1" tall return flanges for rigidity and strength. Tapered and hinged style side guard configurations are also available, such as for EDS feed applications, enabling bag removal and insertion at the feed entry of the EDS.



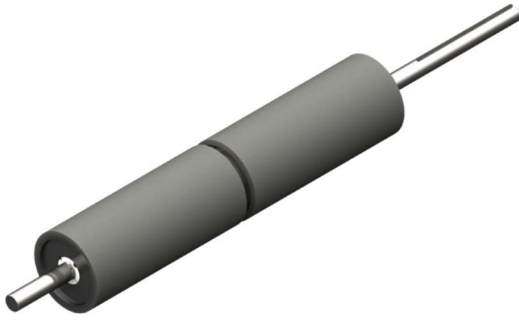
Supports:

Floor mounted conveyors are supported on formed 10 Ga. Steel channel leg assemblies. Each assembly is adjustable in height by means of slotted channels and galvanized brackets. Ceiling mounted conveyors are supported by 3/4" all thread and sill angle.

Belting:

Belting is "V" belt guided for positive tracking, typically either "LG" longitudinal grooved, or other as specified. Belting lacing is typically UX-1SP for LG belts, or as specified in conjunction with nylon coated wire cable (Clipper Nylosteel).

Floor Support, "H" Configuration

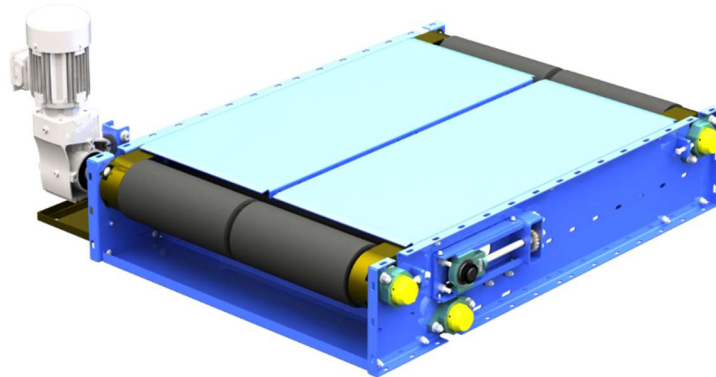


Pulleys: Drive pulleys, take-up pulleys, and end pulleys are of steel construction, machined for “B” belt type center groove for positive tracking of the belting. Drive pulleys and end/take-up pulleys are equipped with taper-bushed hubs and shaft diameter as specified, typically $\text{Ø}1\text{-}7/16$ ” CRS. Dodge ABHS bearings are the typical selection of bearings used on the Uni-Queue, unless otherwise specified. Drive pulleys are $\text{Ø}6\text{-}3\text{-}4$ ” overall with $3/8$ ” lagging. End pulleys are also V-grooved and are $\text{Ø}6$ ”.

Trim and Finish: Trim and cladding consists of either powder coated 12 Ga. HRS or 12 Ga. 304 Stainless steel with a #4 brush finish. Finishes for HRS conveyor frames, side guards, or supports are powder coated to customer specification.

Drives: A variety of drive configurations for the Uni-Queue are available including:

- Shaft Mounted Helical Bevel Reducer
- Chain and Sprocket with inline helical reducer
- V-Belt and Sheave
- Motorized Pulley



Queue Assembly, No Side Guards, Nord Reducer